



Getting results with APM Ltd

Andrew Herbert

andrew.herbert@ansa.co.uk

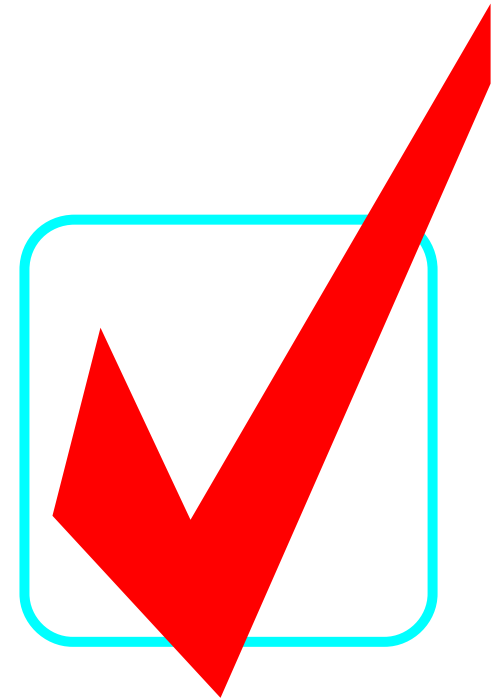
<http://www.ansa.co.uk>

01223 564486



APM

- **Research leaders since 1985**
 - *ANSA Research Programme*
- **Source of technology**
 - *ANSA Object Request Brokers*
 - *WWW - CORBA integration*
 - *Java*
- **Source of expertise**
 - *Distributed system architectures*
 - *Network security*
 - *Training*



Time to move on?

- **Alvey ANSA Objectives achieved**

- *standards for distributed objects*
- *RM-ODP*
- *OMG CORBA*
- *JAVA*
- *Web Objects for Electronic Commerce*

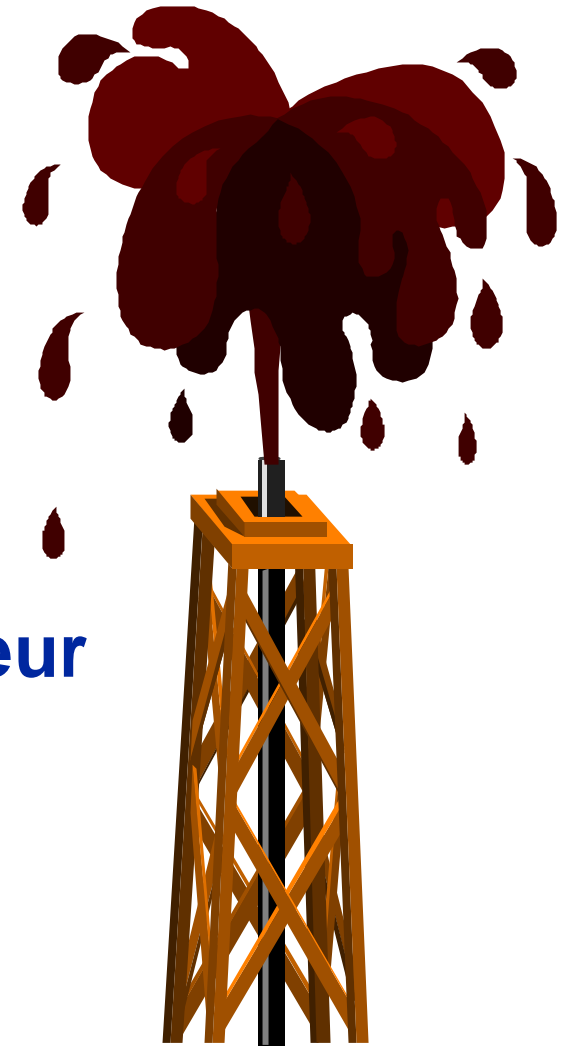
- **Lots of fertile research topics to follow up on, but no big agenda**

- **Standards in progress via OMG, WWWC**

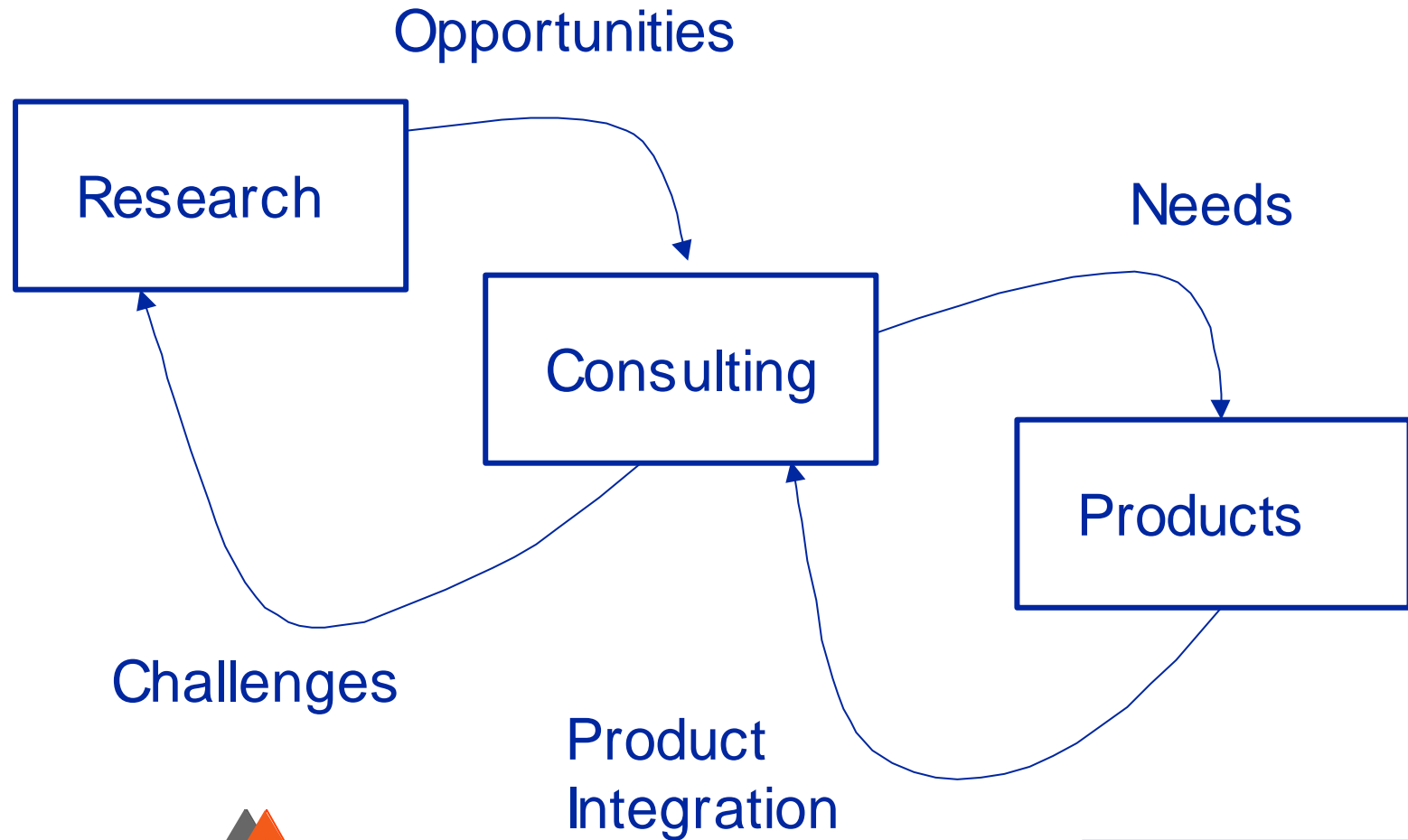


APM has changed

- Replaced MD (Mike Eyre) Dec 96
- Raised £5M capital....
- ...to create a product business
 - *Digitivity*
 - *Java deployment*
- ...to move consulting from amateur to professional approach
 - *Internet applications / security*
- ...to target research



The APM Pipeline

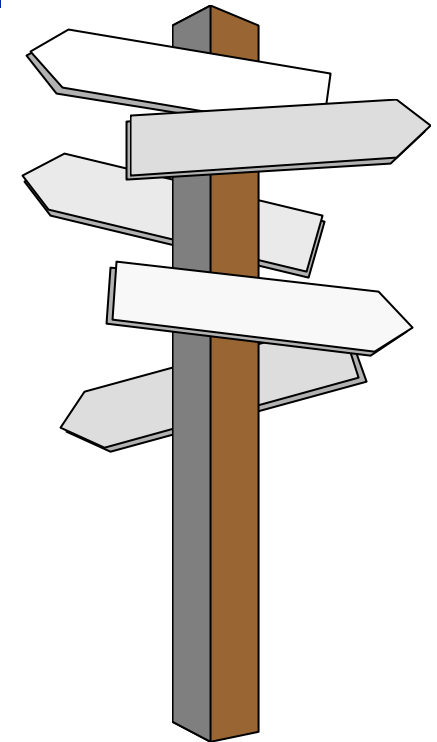


How should APM and the sponsors continue to work together?



Time to review

- **So long and thanks for all the fish....**
 - **Wastes the investment to date**
- **Continue “hands off” involvement**
 - **What’s the benefit to either of us?**
- **Get closer**
 - **What does this mean in practice?**



Lets.....

- **continue in ongoing “lightweight” ANSA**
 - *exploring new technologies*
- **build consulting partnerships around complementary expertise**
- **have APM mentor / train sponsor teams converting to Internet / CORBA / Java**
- **use our products in systems for your customers**



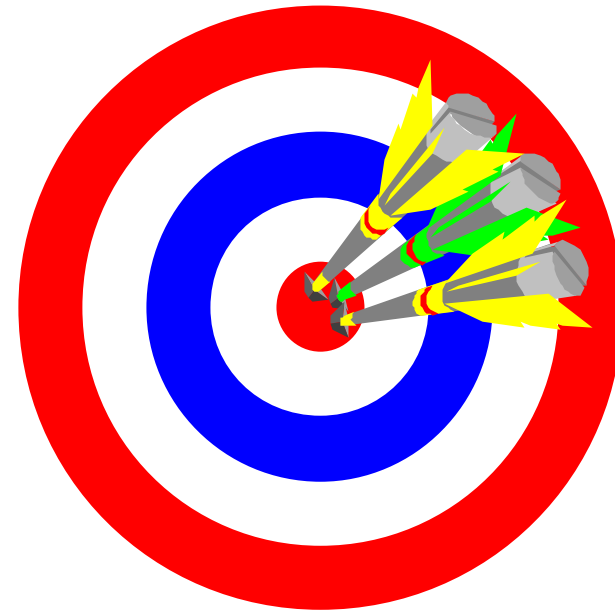
Benefits

- **Access to leading edge research team**
 - *both our work and the groups we talk to*
- **Access to experts in secure internet applications**
 - *building real systems for serious clients*
- **Access to leading edge products**
 - *development team up-to-speed on Java*
 - *important commercial relationships*

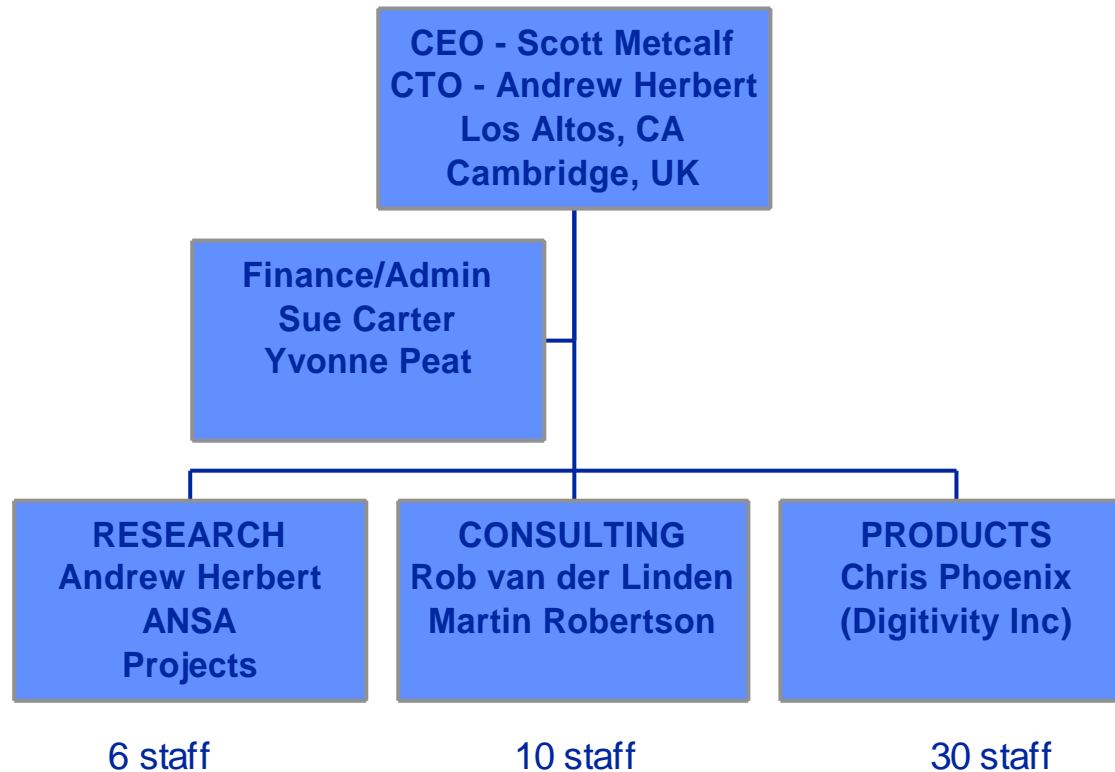


Action Plan

- **Understand APM Ltd better**
 - *this presentation*
- **Identify champions for**
 - *research interests*
 - *joint consulting*
 - *consulting for you*
 - *using our products*
- **Set criteria for judging success**



APM Ltd OrgChart



ANSA

- **Started in 1985**
- **Architecture for Open Distributed Processing**
- **Shared pre-competitive research between vendors and users**
 - **results: investigations, predictions, prototypes**
 - **benefits: insight, standards, reduced risk**
- **Impact via standards**
 - **contributed to OSF DCE definition**
 - **major contributor to OMG ORB and Object Services**
 - **ISO / ITU Reference Model for ODP**



Important ANSA results

- **ANSAware -- anticipated CORBA**
- **ANSAware/RT -- resource management**
- **ANSAware -- CGI to IIOP gateways**
- **Jade -- Java IIOP client**
- **Quartz -- WWW, CORBA and Java based workflow system**
- **ISO 10746 Reference Model for Open Distributed Processing**
- **OMG CORBA, IIOP, Trader, Streams, use of RM-ODP**



ANSA 1997

- **Sponsors:**

- BT, DRA, France Telecom, Fujitsu, **GEC**, GPT, ICL

- **Focus**

- CORBA, Java, Internet
- deployment of mobile components across enterprise boundaries

- **DIMMA** - real-time ORB with multimedia support

- **Reflective Java** - meta object protocols for Java

- **FlexiNet** - architecture for component-oriented middleware

- **FollowMe** - systems architecture for mobile agents



Other Research Projects

- **Visible to sponsors**
- **ESPRIT: E2S Internet End-to-end security**
 - Secure electronic commerce with HP, Visa, Swiss Bank
- **ACTS: RETINA (uses DIMMA)**
 - Telecoms Object Request Broker
 - Real-time, multi-media streams handling
- **UK DTI: DCAN (uses DIMMA)**
 - Distributed control of lightweight ATM networks
- **ESPRIT: PEGASUS (uses FlexiNet)**
 - Resource management for mobile applications
- **ESPRIT: TRENDS (uses ANSAweb, Jade)**
 - Road traffic information systems



ANSA Topics

- **E2S Final Architecture**
- **FollowMe Architecture**
- **Mobile Object Workbench**
- **Mobile Agent Security**
- **Declarative Transactions**
- **Declarative Binding**
- **Reflection at Lancaster**



Consulting

- **Leverage core skills**
 - Architecture, CORBA, Java, security, electronic commerce, telecoms infrastructure
- **Private to APM but helps ANSA keep feet on the ground**
- **Services:**
 - Technology strategy guidance
 - System design and review
 - Pilot implementations, proof of concept demos
 - Technology development
 - Training



Examples

- **Cybernames**
 - context sensitive directory service
 - Bellcore
- **C3I systems modelling**
 - UK Ministry of Defence
- **Secure RMI and IIOP for Java**
 - Swiss Bank, MoD (KAMAE)
- **Electronic payment systems modelling**
 - consortium of US banks
- **Electronic commerce strategy**
 - Kleinwort-Benson, Dow Jones Telerate



Key Features

- **No longer a sideline -- we have real customers!**
- **Typical customer is at bleeding edge and needs to de-risk a big leap**
- **We get involved at start of project**
- **Provide well qualified experts**
- **Lay down architecture**
- **Hand on to systems integrators**
- **Fill in technology gaps**

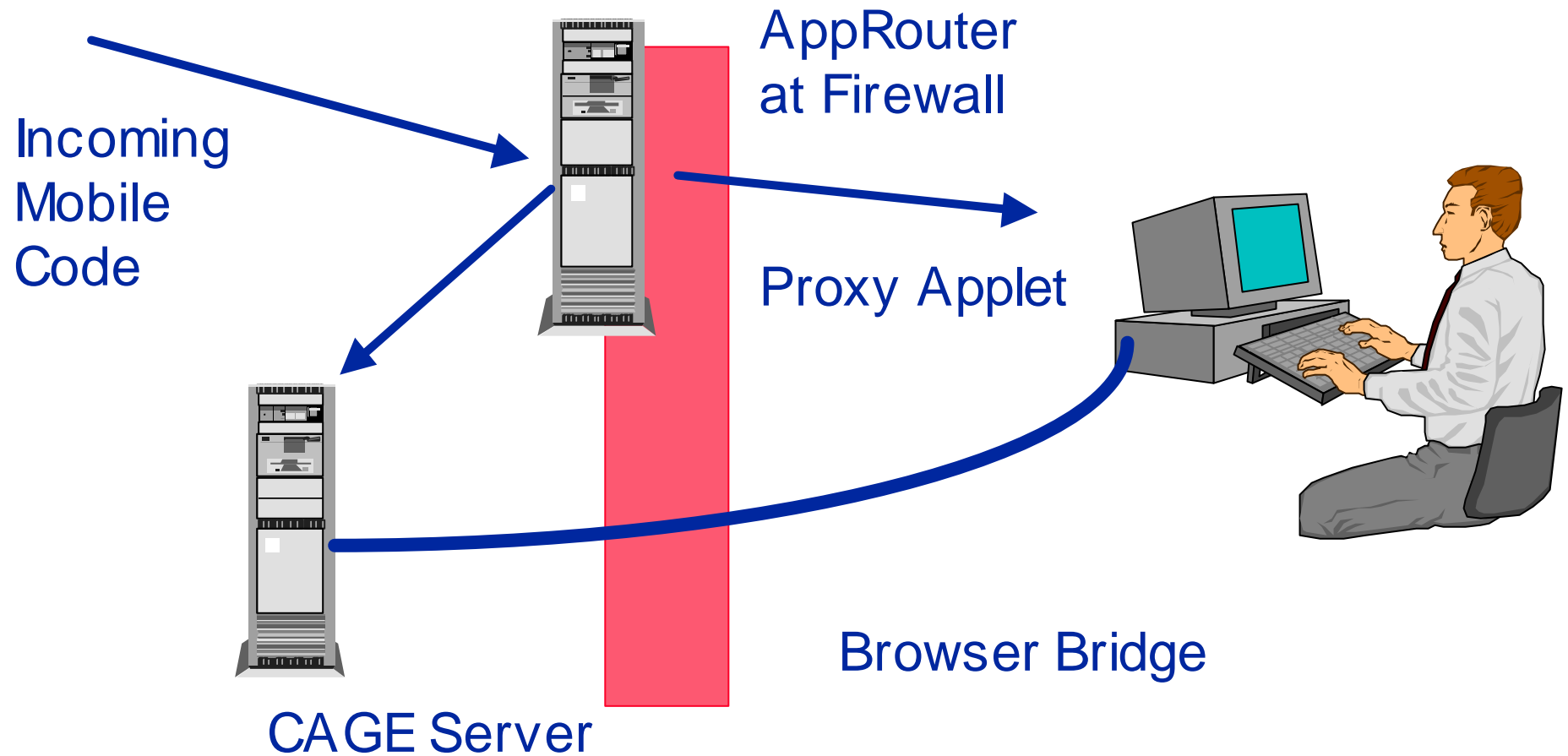


Products

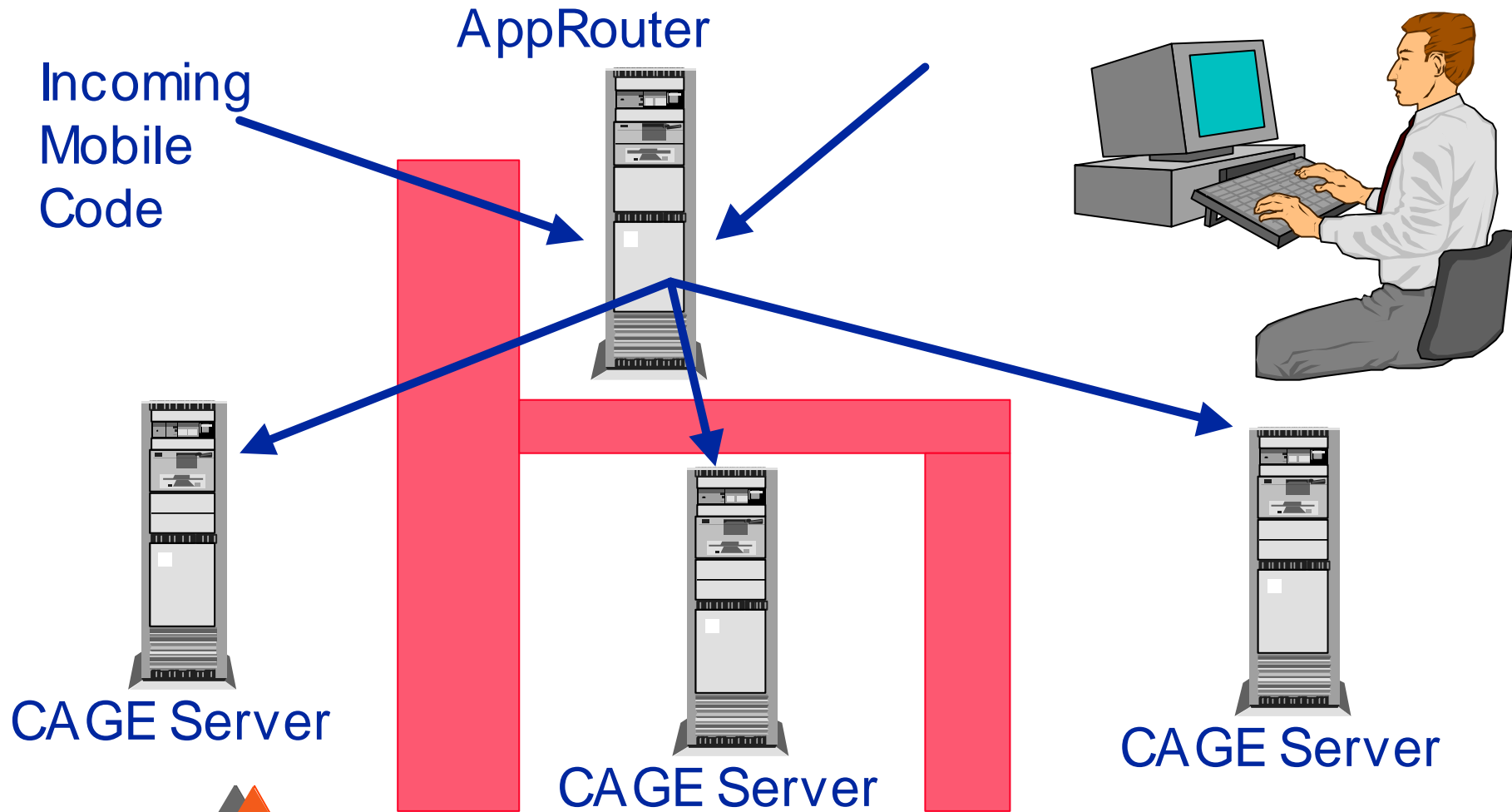
- **Digitivity brand - www.digitivity.com**
- **Application Management System for enterprise Java applications**
 - **CAGE** - transparently secure intranets against external Java
 - **CODE CONDUCTOR** - route Java applications to Java servers according to central policy
 - **Evolution** - controlled bridges to legacy applications and data



Digitivity CAGE Product



Code Conductor Product



Product Features

- **Centralised management and control**
- **Leverages existing investments**
- **Security**
- **Auditing**
- **Resource management**
- **Neutral to Java wars**
- **Good reception in market place**



Summary

- **Three points of contact**
 - **research / technology**
 - **consulting**
 - **product**
- **Each gives the sponsor a competitive edge**
- **Don't lose the opportunity**

