



---

**Poseidon House  
Castle Park  
Cambridge CB3 0RD  
United Kingdom**

TELEPHONE:  
INTERNATIONAL:  
FAX:  
E-MAIL:

**Cambridge (0223) 323010  
+44 223 323010  
+44 223 359779  
apm@ansa.co.uk**

---

**ANSA Phase III**

## **APM Overview**

**Andrew Herbert**

### **Abstract**

This is a short presentation outlining the history, structure and charter of APM. It includes a description of the contractual basis for the ANSA Phase III Workprogramme.

---

APM.1053.00.02

**Draft**  
Briefing Note

2 September 1993

---

**Distribution:**  
**Supersedes:**  
**Superseded by:**

Copyright © 1993 Architecture Projects Management Limited  
The copyright is held on behalf of the sponsors for the time being of the ANSA Workprogramme.





## **Architecture Projects Management Ltd**

- **Founded in 1988 as focus for development of ANSA**
- **Run as a business**
- **Profit reinvested in growth of company**
- **Main activity (by staff and turnover) is ANSA Workprogramme on behalf of industry sponsors**

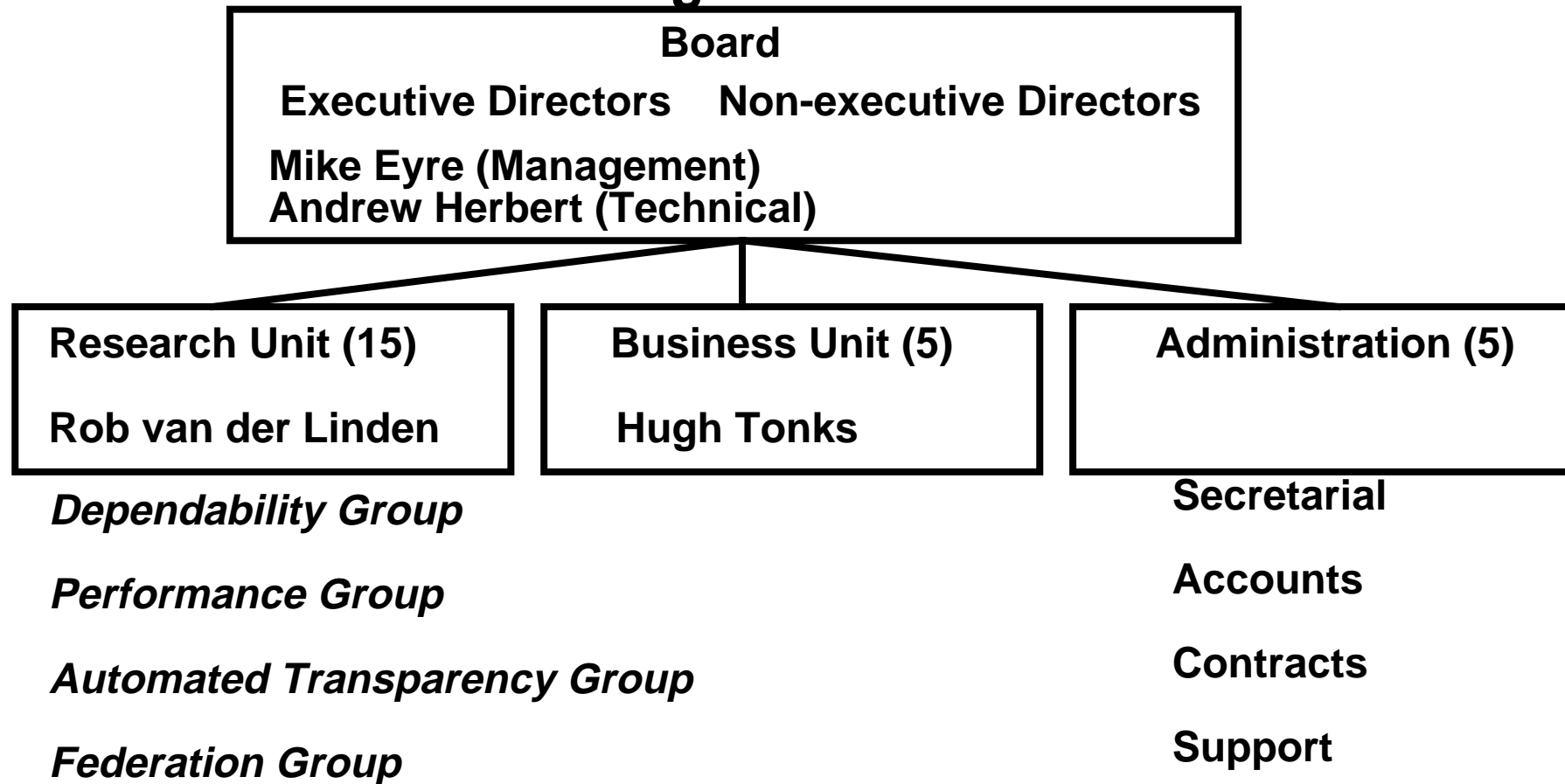


## History

- **1985-88 ANSA Project started in UK under Alvey Programme**
  - developed understanding of *architecture*
  - developed basic ANSA computational and engineering models
  - built prototype DCE like distributed platform over MSDOS, VMS and Unix (ANSAware)
  - twelve partners, based in US and UK, coordinated by a management consultancy
  - goal was to build up capability in distributed computing
- **1988-93 ESPRIT Integrated Systems Architecture Project**
  - developed architecture for major transparencies
  - extended ANSAware with CORBA like capabilities and support for major transparencies
  - twenty one partners, based in Europe and US coordinated by APM
  - goal was to widen constituency, exploit the architecture and demonstrate benefits



## Organization



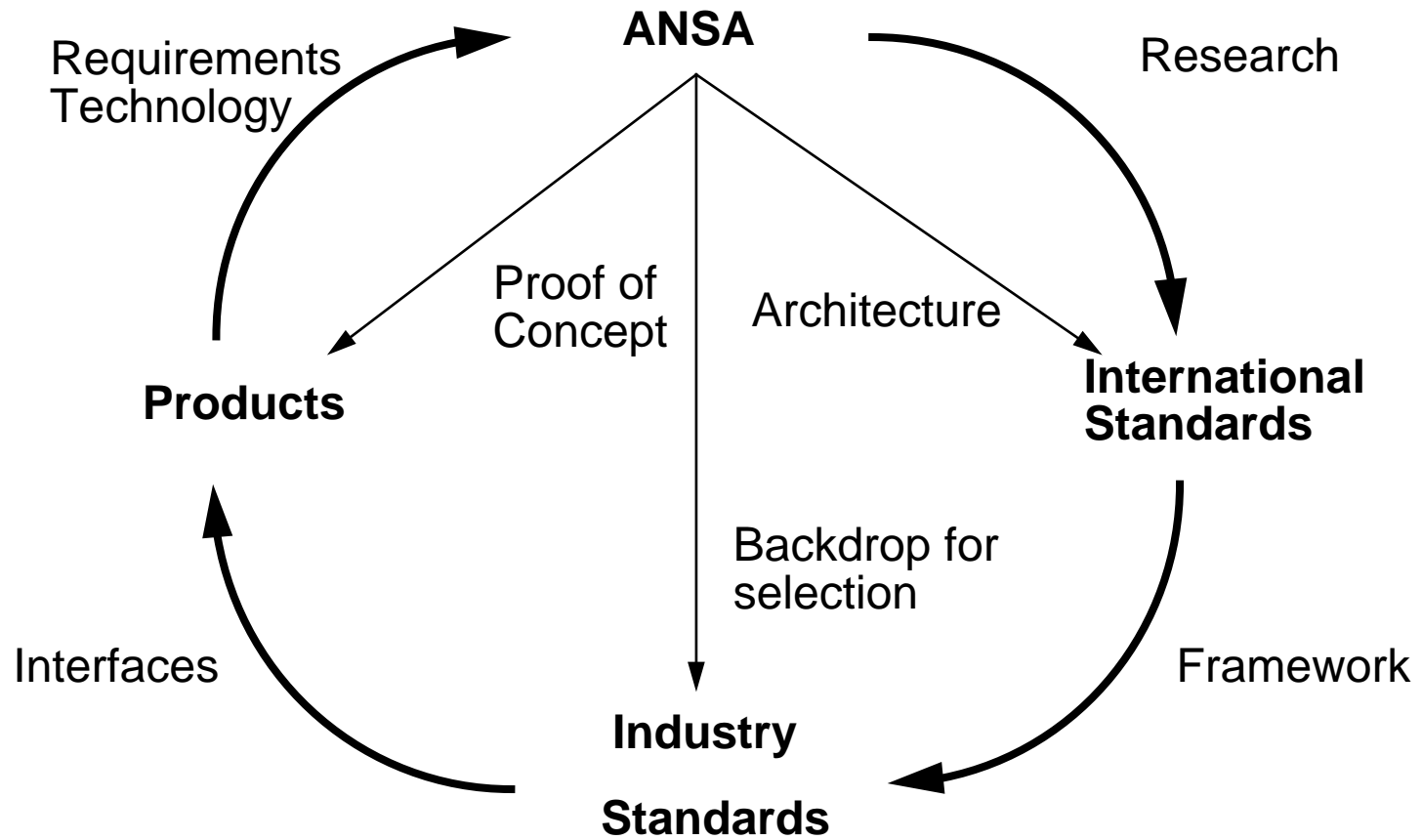


## Founding Sponsors

- **Bellcore**
- **Bell Northern Research - Europe**
- **British Telecom**
- **Digital Equipment Corporation**
- **France Telecom**
- **GEC**
- **GPT**
- **Hewlett-Packard Company**
- **ICL**
- **Open Connexion**
- **Additional sponsors identified**



# Positioning





## **ANSA Phase III Contractual Structure**

- **Consortium agreement between sponsors**
  - **establishes Management Committee**
  - **establishes Technical Committee**
  - **establishes sharing of results and exploitation rights**
  - **establishes principle of openness**
  
- **Identical Project Management Agreement between each Sponsor and APM**
  - **obligations upon APM to operate Phase III efficiently as directed by sponsors**





## **Business Unit**

- **Participation in Projects**
  - where there is “ANSA benefit”
- **Consultancy**
  - where there is “ANSA benefit”
- **Education / Awareness**
- **Supply of ANSAware**
  - to other projects
  - to research institutions
  - to teaching institutions
- **Monitored by sponsors**



## APM Charter

- **Research and develop advanced capabilities in distributed systems, embodying them in ANSA**
- **Lead and promote the acceptance of standards for open distributed processing**
- **Transfer the technology to the ANSA sponsors by interaction with research, development and engineering units**
- **Catalyze the market for distributed systems via supply of vendor neutral examples of ANSA technology, consultancy and training**